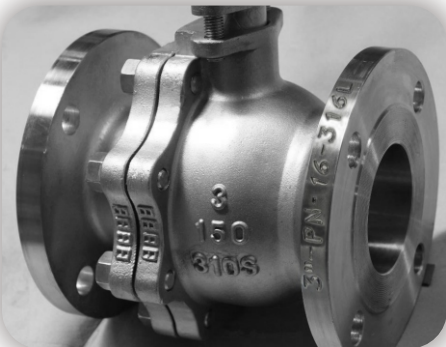
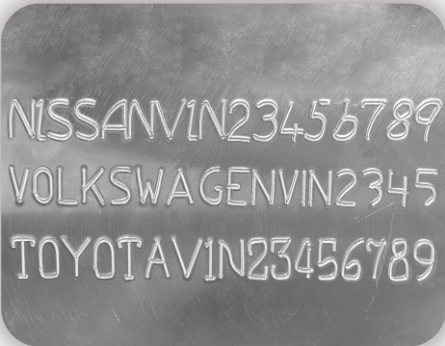


气动标刻系统

PNEUMATIC DOT MARKING SERIES

相较于日趋流行的激光标刻系统,气动针式标刻系统在金属材质标记上更具性价比,尤其在有一定深度要求的工件上气动针式的效率远胜激光。

Compared to the increasingly popular laser marking systems, pneumatic needle marking systems are more cost effective for marking metals, especially for workpieces that require some depth, where the efficiency of pneumatic dot marking is far superior to that of lasers.



标记深度 Marking depth	0.01-1mm	气压 Compressed Air	0.2-0.6Mpa
标记速度 Marking speed	2-5字符 (2x2mm/s) 2-5characters (2x2mm/s)	针头硬度 Stylus pin Hardness	HRA92/HRA93

产品展示 SHOWCASE



80*40/120*50mm



130*30~110*20mm



140*80mm



140*80mm



150*80~300*100mm



200*200~400*400mm



80*40mm



140*80mm



80*40~200*200mm



140*80mm



80*40~140*80mm



定制范围 (Custom)

注: 仅展示部分机器式样, 若有更多外观或结构需求请咨询销售人员。
Note: Only shows part of the machine style, if you have more appearance or structure needs, please contact the sales staff.

气动刻划系统

PNEUMATIC SCRIBE MARKING SERIES

我们自行研发生产的刻划系统可在金属表面提供清晰、光滑且无毛刺的标记效果，并在深度标刻、标刻效率、工况噪音上取得了平衡，以满足高端客户在产品细节上的挑剔需求。

Our scribing systems are designed and manufactured to provide clear, smooth and burr-free marking on metal surfaces with a balance of depth marking, marking efficiency and noise to meet the demanding product detail requirements of our high-end customers



定制范围(Custom)



定制范围(Custom)



120*30/150*90mm

标刻深度 Marking depth	0.01-1.8mm	刻划噪音 Scribing noise	<60dB
标记速度 Marking speed	1-180字符/分 1-180Characters/min	标记宽度 Marking width	0.1-3.4mm

电动标刻系统

ELECTRIC DOT MARKING SERIES

我们提供可灵活部署和使用电动针式系统，无需压缩空气即插即用，尤其适合各类入门级金属标记需求。更有充电电池驱动的手持款式以便客户移动标刻。

We offer the flexibility to deploy and use electric marking systems that are plug-and-play without compressed air, which are ideal for entry level metal marking demands, as well as handheld models powered by rechargeable batteries for mobile marking.



120*30mm



140*80mm



80*40/120*30mm

标记深度 Marking depth	0.05-0.3mm	字符大小 Character size	≥1mm
标记速度 Marking speed	1-3字符/秒 1-3Characters/s	针头硬度 Stylus pin Hardness	HRC93

PNEUMATIC MARKING NEEDLE

我们自2006年起便自行开发和生产各类打标针, 以满足不同客户对于标记速度, 深度, 线宽等需求. 时至今日, 我们已是世界范围内领先的打标针源头厂家, 年出货量占全国打标针的50%以上, 有近百个标准化的SKU并远销全球, 以满足各行业客户的不同需求.

Since 2006, we have continuously developed and produced marking needles to meet the needs of different customers in terms of speed, depth and line width. Today, we are the world's leading source of marking needles, accounting for more than half of the annual shipments of marking needles in China, with nearly 100 standardized SKUs and exported globally to



铝壳
Aluminum Series



钢壳
Steel Series



铜壳
Copper Series

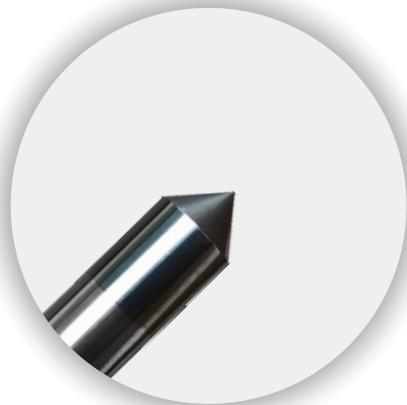


镀层
Plated Series

针套材质 Shell Material	铝/铜/钢 Aluminum / Copper / Steel	针芯直径 Needle Core Dia.	1/2/3/4/5/6/7/8/(定制) or custom
针芯材质 Needle Core Material	95HRA碳化钨钢针 Tungsten Carbide Steel	螺纹规格 Threads	M18/M24/M26/M32/(定制) or custom

可选特殊工艺

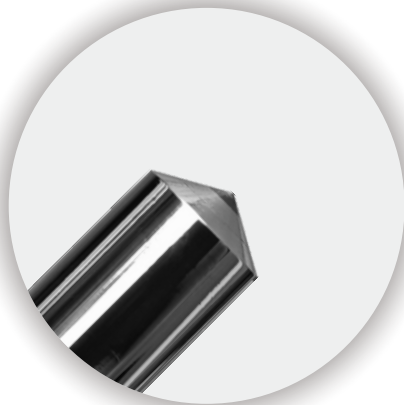
OPTIONAL SPECIAL PROCESS



镀钛
Titanization Tip



双角度
Twin Angle Tip



镶钻
Diamond Tip



L1-10.7-60-M26



L3-12.8-58-M24



L4-17.2-65-M26



L4-17.2-120-M26



L3-10.7-85-M26



L2.5-6-56-M26



T3-12-62-M26



T3-12-93-M26



T3-16.5-60-M26



T4-16.5-60-M26



T6-20-108-M26



T5-20-67-M32



LS2-8-60-M26



LS3-12-63-M24



LS3-14-65-M24



LS4-20-65-M30



LS6-25-95-M34



LS6-33-97-M45



LS6-33-97-M45



G3-10-75-M27



G6-27-58



G8-27-59



G8-49-64



E4-84-S39



E4-110-S39

仅展示我们数千种打标针中部分热销型号, 若有不同规格或工艺需求请咨询销售人员。
Note: Only some of our thousands of marking needles are shown in the hot models, if you have different specifications or process needs, please contact the sales staff.